

Okizu SIBS Camp Acceptance Form 2019

This Acceptance Packet confirms your child's session of SIBS (Special and Important Brothers and Sisters) camp, and should provide you with the information you need to prepare for a week at Okizu. Please look over the packet carefully.

Please bring the following with your child to the bus or to camp:

- ____ Medications
- ____ Snacks for the trip
- ____ Motion sickness pills (if needed)
- ____ Photo envelope/form (optional)

Bus Chaperones: We need two parent volunteers on each bus as chaperones, and hope you can be one of them. Chaperones will assist and supervise the kids during the bus ride. If you're available for any of the trips, please confirm here: <http://www.surveymonkey.com/r/2019OkizuBus>

Safety Reminder: Please drive carefully and slowly at all Okizu bus stops. All stops are in public areas. Please be aware of pedestrians, other vehicles, and any other hazards. All pets should remain in the car at the bus stop.

Monday
(From the bus stop to camp)

Bus Stop – Palo Alto
Load – 7:15 am
Depart – 7:30 am

Bus Stop – East Bay
Load – 8:30 am
Depart – 8:45 am

Bus Stop – Fairfield
Load – 9:15 am
Depart – 9:30 am

Bus Stop – Sacramento
Load – 10:00 am
Depart – 10:15 am

Drivers
Arrive at camp between 10:30 – 11:00 am

**Directions to all Okizu bus stop locations are
on page 2 of this packet.**

Sunday
(From camp to the bus stop)

Bus Stop – Palo Alto
Depart – 11:45 am
Arrival Home – 4:00 pm

Bus Stop – East Bay
Depart – 11:45 am
Arrival Home – 3:00 pm

Bus Stop – Fairfield
Depart – 11:45 am
Arrival Home – 2:30 pm

Bus Stop – Sacramento
Depart – 11:45 am
Arrival Home – 2:00 pm

Drivers
Pick your child up between 10:30 – 11:00 am

**Directions to all Okizu bus stop locations are
on page 2 of this packet.**

If you need to make changes to your child's drop-off or pick-up time or location please call the Okizu office. If, for some reason, the bus drop-off or pick-up time or location has changed, the Okizu office will contact you.

Directions to Okizu Bus Stops

Palo Alto: The Okizu bus will pick up and drop off at Palo Alto High School, 50 Embarcadero Road, Palo Alto, CA 94301. The parking lot is on the corner of Embarcadero Road and El Camino Real.

From US-101 North

Head northwest on US-101 North toward Exit 402
Keep left at the fork, follow signs for Embarcadero Road/Stanford University
Keep left at the fork, follow signs for Embarcadero Road West and merge onto Embarcadero Road
Keep left at the fork
Palo Alto High School will be on the left

From US-101 South

Take exit 402 for Embarcadero Road/Oregon Expressway
Keep right at the fork, follow signs for Embarcadero Road West and merge onto Embarcadero Road
Keep left at the fork
Palo Alto High School will be on the left

From I-280 North

Head west on I-280 North
Take exit 24 for Sand Hill Road
Keep right onto Sand Hill Road
Turn right onto Arboretum Road
Turn left onto Galvez Street
Continue onto Embarcadero Road
Palo Alto High School will be on the left

From I-280 South

Head southeast on I-280 South
Take exit 24 for Sand Hill Road toward Menlo Park
Keep left at the fork, follow signs for Sand Hill Rd E
Keep right at the fork, follow signs for Sand Hill Road and merge onto Sand Hill Road
Turn right onto Arboretum Road
Turn left onto Galvez Street
Continue onto Embarcadero Road
Palo Alto High School will be on the left

East Bay: The Okizu bus will pick up and drop off at Park and Ride lot at exit 19B on I-80.

From I-80 East

Take exit 19B
Continue straight through the intersection, across Hilltop Drive
Take an immediate left into the Park and Ride lot

From I-80 West

Take exit 19B toward Hilltop Mall-Auto Plaza
Keep left at the fork; follow signs to Hilltop Drive South
Turn left onto Hilltop Drive onto the overpass
At the end of the overpass, turn left at the first light
There is a green 'park and ride' sign and you can see the lot on your left.
Take an immediate left into the Park and Ride lot

Fairfield: The Okizu bus will pick up and drop off at Park and Ride lot at the Red Top Road exit on I-80. It is across from the Sunnyside Dairy.

From I-80 East

Take the Red Top Road exit
Turn left at the stop sign onto Red Top Road – You will go under the freeway
Continue through the next stop sign on Red Top Road
Follow road around the right, past the 76 station
Turn right into the Park and Ride lot

From I-80 West

Take the Red Top Road exit
Turn right onto Red Top Road
Follow road around the right, past the 76 station
Turn right into the Park and Ride lot

Sacramento: The Okizu bus will pick up and drop off at the J/K section of the Ikea parking lot, 700 Ikea Court, West Sacramento, CA 95605.

From I-80 East

Take the Reed Avenue exit
Turn right onto Reed Avenue
Turn right onto Ikea Court
Continue to the J/K section of the parking lot

From I-80 West

Take the Reed Ave. exit toward West Sacramento
Turn right onto Reed Avenue
Turn right onto Ikea Court
Continue to the J/K section of the parking lot

None/Driving:

You are responsible for your child's transportation to and from camp. Please see the attached map for directions to camp and plan to drop off and pick up at camp between 10:30 am and 11:00 am.

Notes:

- Please allow plenty of time to find the Okizu bus stops. We are not able to hold the bus for folks who are late and it can be very sad and stressful if you miss the bus.
- Please research the specific directions from your house before you head to the bus.
- If you do get lost you can call the office at 415-382-9083 and we will try and help.

Welcome to Okizu's SIBS (Special and Important Brothers and Sisters) Camp program!

This Acceptance Packet confirms your child's session of SIBS Camp, their chosen transportation, and should provide you with the information you need to prepare for a week at Okizu.

Okizu Health Form Information for SIBS and Oncology Campers:

- All SIBS/Oncology campers have already submitted a Health History Form as part of the application process.
- All Oncology campers require a second medical form signed by their doctor.
- Only SIBS campers who require treatment, restriction, or accommodation while at Okizu require a second medical form signed by a doctor. That document, the Camper Health Care Form 2, is included in your child's Acceptance Packet, and must be completed, signed by a physician, and come with your child to the bus/camp.

Okizu's online application system does not allow you to make changes to submitted applications, so if you need to request a change, update information, or feel there is an error, please contact the Okizu office by phone or email.

We look forward to welcoming your children at Okizu this summer.

Sincerely,

Kristen Hitchman

Kristen Hitchman
Camp Director

Medical Information

Dear Parents,

This letter is to explain the health care coverage that will be provided to your child during the camp session.

Dr. Michael Amylon, Medical Director for camping programs, supervises medical coverage at Camp Okizu. Additionally, health care professionals including doctors, nurses, and social workers from the various hospitals that participate in the Okizu programs volunteer their time to meet the needs of campers throughout the summer.

At least one pediatric oncologist and several pediatric oncology nurses will be present at each Oncology Camp session. Nurses from the treatment centers provide care at the SIBS Camp sessions, with back up from a pediatrician who is always available by phone. Usually, there is a pediatric oncologist present throughout the SIBS Camp sessions as well. The camp medical staff is able to consult with the hematology/oncology team at your child's treatment center at any time if questions arise regarding his/her treatment or condition. These professionals provide continuous supervision of the health care needs of your child, ensure that medications are given appropriately, and arrange for special procedures such as laboratory tests and transfusions.

The Medical Director or his designee will contact you if there is any significant illness or injury to your child, or any medical need that requires a visit to the local hospital. While camp is in session, please feel free to call the camp Health Center at 530.589.6983 or the camp office at 530.589.6985 if you wish to discuss your child's condition or care needs with one of the medical staff.

Sincerely,



Michael D. Amylon, M.D.
"Dr. Mike"
Camp Medical Director

What to Bring to Camp Okizu

Suggested items to bring: You do not need to own all these items to attend Camp Okizu. Please call the office if you have questions or need help with items on the list.

- | | |
|--|---|
| <input type="checkbox"/> Sleeping bag | <input type="checkbox"/> Shorts |
| <input type="checkbox"/> Pillow | <input type="checkbox"/> Long pants |
| <input type="checkbox"/> Washcloth | <input type="checkbox"/> Warm pajamas |
| <input type="checkbox"/> Toiletries | <input type="checkbox"/> Swimsuit |
| <input type="checkbox"/> Underwear (8 pairs) | <input type="checkbox"/> Closed toe shoes x2 (in case one gets wet) |
| <input type="checkbox"/> Socks (8 pairs) | <input type="checkbox"/> Water bottle |
| <input type="checkbox"/> T-shirts (7) | <input type="checkbox"/> Flashlight |
| <input type="checkbox"/> Long sleeve shirts | <input type="checkbox"/> Insect repellent |
| <input type="checkbox"/> Sunscreen | <input type="checkbox"/> Medication (one week supply in its original container) |
| <input type="checkbox"/> Jacket, sweatshirt | <input type="checkbox"/> Towels x2 (one for showering and one for swimming) |

Please mark your child's name on all belongings you want returned if lost or forgotten. After each week of camp there are clothes, towels, pillows, etc. that go unclaimed and we can only return items we can identify. We will hold unclaimed lost and found items until October.

Personal property regulations at Camp Okizu:

- We do not allow pets, alcohol, illegal or recreational drugs (including tobacco products, electronic cigarettes, and matches/lighters), or weapons of any kind. People who bring any of these items will not be allowed at camp.
- Personal vehicles are allowed to transport campers and staff to camp, but must remain in the parking lot (and not driven around camp) while camp is in session.
- Personal sports equipment (archery, fishing, bats, climbing gear, etc.) is discouraged, as items often get lost or damaged while at camp. If your child opts to bring them, they must be packed, stored, and transported to camp in a way that will be safe for anyone who comes in contact with them. We will not be responsible in case of loss or damage under any circumstances.
- Cameras are allowed, but cell phones are not. We encourage disposable cameras with your child's name on them.

Personal electronic devices and cell phones are not allowed at Camp Okizu.

- This may seem drastic but it does work. Every summer we welcome a large, skeptical group of text-crazy teens and tweens who thrive during their week at Camp Okizu without their devices.
- If cell phones or personal electronic devices do come to camp they will be put in a brown bag marked with the camper's name on the first day of camp and given back at the end of the week.
- We are not responsible in case of loss or damage to any of these items under any circumstances.

Mail:

- **Send it early.** Camp Okizu is on a rural mail route and mail takes at least five business days to get there.
- **Don't send it to the Okizu business office.** All camper mail should be sent to the campsite address.
- **Address mail as follows:**



Camper Name
c/o Camp Okizu
PO Box 1310
Berry Creek, CA 95916

Important Information

Phone calls:



- Parents are welcome to phone the Camp Director to see how their child is doing any time and as often as they would like. We are used to getting calls from parents and are glad to be able to tell you how your kids are doing.
- In order to keep everyone in the camp spirit and try to manage moments of homesickness, we have elected not to have kids use the phone while they are at camp. This does not apply to family emergencies.
- The camp phone number is **530.589.6985**.

Camp photos (optional):

- If you would like to participate in the camp photo opportunity, fill out the enclosed order form/envelope from Visual Sports Network, include payment for the correct amount (checks should be made payable to **Visual Sports Network**), and have your child bring the form/envelope and payment to camp.
- Do not pack the photo information in your child's suitcase. It should accompany the other Okizu forms and be turned in at the bus stop or at camp if you are driving.
- Photos will be sent in the mail by Visual Sports Network. It takes 4-6 weeks.

Health information:

- All Oncology/SIBS campers have already submitted a Health History Form as part of their application process.
- All Oncology campers require a second medical form signed by their doctor.
- All SIBS campers who require treatment, restriction, or accommodation while at Okizu also require a medical form signed by a doctor.
- Health care professionals including doctors, nurses, and social workers from the hospitals that participate in the Okizu programs meet the medical needs of campers throughout the summer. At least one pediatric oncologist and several pediatric oncology nurses will be present at each Oncology Camp session. Nurses from the treatment centers provide care at the SIBS Camp sessions, with back up from a pediatrician who is always available by phone. Usually, there is a pediatric oncologist present throughout the SIBS Camp sessions as well.
- All medications must be well marked with instructions for dosage and schedules and must be in their original container and will be dispensed by the camp nurse.

Know before you go:

We want Camp Okizu to be a place that is safe and fun for all the kids. In order to be sure that we are maintaining an environment that is physically and emotionally safe and supportive, we have set some guidelines/ground rules that we all agree to operate within while we are at camp. We feel it is in the kids' best interests if they are aware of these before they come to camp. This will help reassure them, and help get them engaged in cooperating as a member of our team. Please discuss these issues with your kids before they come to camp. Some of our ground rules include, but are not limited to:

- **Respect the program – the kids, the staff, the camp, the songs, everything.**
- **Cooperate with your counselor and other staff at all times.**
- **Actions or behavior that endangers people or property will result in losing your privilege to finish your week at camp.**
- **It is important that we treat the camp with respect and not participate in any destruction of equipment, property, belongings or facilities. These are behaviors that will result in losing your privilege to be at camp.**
- **Cell phones and personal electronic devices interfere with the 'back to nature' atmosphere that we are trying to create during the week and you will not have access to them while you are at camp.**



We are delighted to have the resources to provide bus transportation for our campers. If you choose to have your child take the bus, s/he will be transported to camp in a chartered, air-conditioned bus with a bathroom. On the bus with your child will be two parent volunteer chaperones. **There will be no medical coverage during the bus ride.** Please read this sheet to understand your responsibilities if you choose to use our transportation.

Campers who require assistance on the bus:

For safety reasons we need to be aware of any physical challenges or special needs of the kids traveling on the buses in advance. By making us aware of these conditions and issues in advance, it will allow us to work together to come up with a plan to get your child safely to camp.

- **Please let us know if your child would require any physical assistance getting off the bus in an emergency situation.** This might be due to a physical condition, or an emotional condition which would make it difficult to get them moving quickly.
- **Please let us know if your child would need help using the bathroom on the bus.** Sometimes there is only a dad or only a mom on the bus and we want to make sure everyone is comfortable.

Safety precautions and behavior expectations on the bus:

- **Please drive slowly and carefully at all Okizu bus stops.** All stops are in public areas. Please be aware of pedestrians, other vehicles, and any other hazards. All pets should remain in the car at the bus stop.
- **Children must be respectful on the bus ride.** It is important for safety that all riders are respectful and listen carefully to any instructions given by the driver or volunteer bus chaperones. Riders should remain seated at all times while the bus is in motion and keep any noise to a level that will not distract the driver. Any disruptive behavior on the bus is a safety risk and may jeopardize a child's privilege to participate in camp.

Parent responsibilities:

By participating in Okizu's bus transportation you agree to:



- **Be on time.** Please arrive at the stop at the times that we designate on the Acceptance Form, and all subsequent communications with you.
- **Be prepared to wait.** Traffic is unpredictable, and in order to provide the safest situation for your child, we need you to be waiting at the bus stop when the bus arrives.
- **On Monday, check-in with the volunteer bus coordinator at your stop.** The volunteer bus coordinator will collect your completed and signed Consent Form, photo order, and any medications that your child is bringing to camp. The Okizu Consent Form will serve as your child's ticket onto the bus.
- **On Sunday, check-out with the Okizu representative at the bus stop.** It is exciting and sometimes hectic when the bus arrives at the stop and everyone is reuniting with their child, so please don't forget to check your child out with the Okizu representative at the bus stop.
- **Be on time.** I know we said it before but we have very limited options if parents aren't there to pick up their children when the bus arrives so for the safety and well-being of all involved, please be on time.

We are delighted to have the resources to provide bus transportation for our campers and appreciate your cooperation and commitment to make it a safe and pleasant experience for the children.

Okizu Policy Regarding Out-of-Camp Contact with Staff

The safety and well-being of our campers – your children – have always been our most important concern. We know that giving your children over to the care of another is a great act of trust, and we aim to do everything we can to earn and keep that trust. But we need your help to keep them as safe and happy as possible. With more and younger children using the internet, cell phones, and other technologies, we need parents to partner with us to ensure that your children continue to have the best possible experience with us.

Please read this policy carefully and discuss it with your children. We have added some tips for internet safety to our website and invite you to read those as well. As always we invite you to call us if you have any questions or concerns about any of these issues.

Your Kids, Our Staff after Camp

We pledge to put your children in the company of trustworthy and capable young adults – counselors who are well-suited to the important task of caring for our campers. The effort we put into screening and selecting our staff is part of that pledge. Our staff work with your children in a visible, well scrutinized environment with built-in checks and balances. Counselors are supervised by senior staff guided by clear, firm policies regarding behavior. Their actions are also visible to co-workers and campers. We have selected them to work with us in the very special context of camp, and therefore we cannot recommend them as baby-sitters, nannies, or child companions outside of camp.

We know that camp can foster the development of close, trusting relationships between counselors and campers and that these relationships can be healthy and beneficial to all concerned. We are aware that many campers will want to keep in touch with their favorite counselors after camp. Our policy is to forbid our staff from having contact with your children outside of camp without the express consent of at least one parent. If you become aware of any unauthorized contact, you should notify us immediately. We engage our staff and volunteers only during the camp season, and we do not monitor, and cannot take responsibility for, their behavior off-season. Of course, as a parent you are free to make your own choice in this matter. If you choose to allow your child to have contact with one of our staff members outside of camp, we need to remind you that you take full responsibility for that relationship, and you should supervise that relationship the same way you would a relationship with an adult that your child had met in any other context. It is also important for you and your children to remember that our staff are busy young adults and may not be able to maintain relationships with campers outside of camp. We hope that recognizing this will help you to manage your children's expectations for out-of-camp contact with our staff.

Our counselors are not allowed to exchange contact information (e.g., email address, cell phone numbers) with campers during camp sessions and are not allowed to “friend” or follow campers on social media websites while the campers are under 18. Our counselors are also not allowed to permit campers to follow them on social media websites. We recommend that parents supervise their children's online activities just as you do other aspects of their lives and oversee any off-season contact between Okizu staff members and your children.

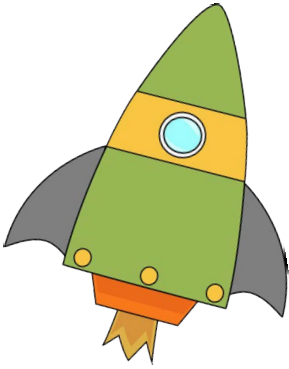
Working Together to Keep Your Children Safe

There are many positive, exciting ways for campers to enjoy the healthy benefits of the internet and other technologies. As advocates for children, we want to work with you to keep those experiences safe, healthy, and positive. That is why we have taken the time to write these policies and to include resources for you and your children on our website. We encourage you to talk with your children, both about camp and their online activity in general.

*With excerpts from Bob Ditter's Policy Regarding Out-of-Camp Contact between Campers and Staff.

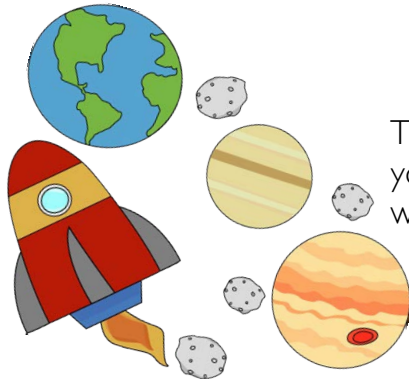
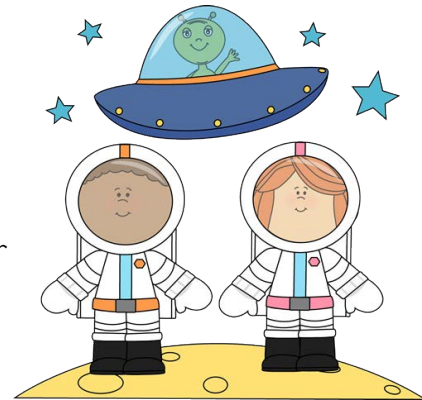
Okizu Theme and Special Event Information 2019

This year we are having an **Intergalactic Summer**, which will include the following themed events and meals:



Come and see which extraterrestrial will join us for our traditional **SPACEball Lunch!** You are invited to bring a baseball hat, t-shirt, or even a jersey to wear!

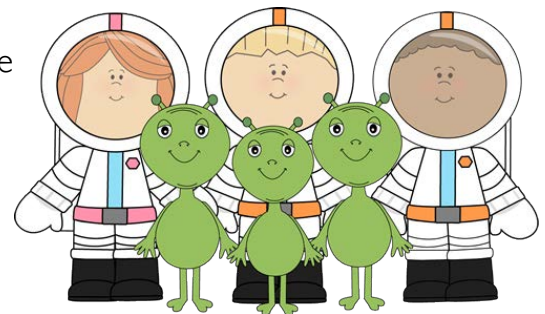
On Wednesday, we will be heading outside for a **Lunar Landing Dinner**. Don't worry, dinner won't be astronaut food! After dinner, we will head to the **Asteroid Field** for some **Galaxy Games** and the **Lunar Lounge** for some **Cosmic Karaoke**.



Thursday's all-camp event will be **Okizu's Meteor Shower**. Grab your swim suit, towel, and dodge the meteor "showers" in our water carnival!

On Friday, we will have a **Rocket-Out Dance!** One more chance to show off your space wear, glow in the dark, moon-shoes, and dance the night away between the space lasers and blacklights!

Additionally, there will be a pajama breakfast at our **Intergalactic House of Pancakes** one day during the week.



We are letting you know about the theme and these events in advance so, if you choose, you can bring costumes or other items to camp. This is completely optional and we will have opportunities to create costumes and other items at camp.

Please don't bring anything that is valuable since many things get lost and dirty at camp. Please also make sure that your costumes, like your regular camp clothing, are always camp appropriate.

Camp Photos (Optional)

CAPTURE THE MEMORY WITH VISUAL Sports

(916) 985-7788

PACKAGES

**PERSONALIZE ME!
INCLUDE YOUR NAME OR NICKNAME
AND YEAR ON ANY PACKAGE
(BUDDY OR INDIVIDUAL)
FOR ONLY AN ADDITIONAL - \$5**

1 LINCOLN
1 - 16x20 Group Portrait
3 - 8x10 Individuals
3 - 5x7 Individuals
8 - Wallets Individuals **\$57.00**

2 REAGAN
1 - 8x10 Group Portrait
3 - 8x10 Individuals
3 - 5x7 Individuals
8 - Wallets Individuals **\$53.00**

3 WASHINGTON
1 - 16x20 Group Portrait
2 - 8x10 Individual
2 - 5x7 Individuals
4 - Wallets Individuals **\$47.00**

4 ROOSEVELT
1 - 11x14 Group Portrait
2 - 8x10 Individual
2 - 5x7 Individuals
4 - Wallets Individuals **\$43.00**

5 KENNEDY
1 - 8x10 Group Portrait
2 - 8x10 Individual
2 - 5x7 Individuals
4 - Wallets Individuals **\$41.00**

6 FRANKLIN
1 - 16x20 Group Portrait
3 - 5x7 Individuals
4 - Wallets Individuals **\$38.00**

7 JEFFERSON
1 - 11x14 Group Portrait
3 - 5x7 Individuals
4 - Wallets Individuals **\$35.00**

8 IKE
1 - 8x10 Group Portrait
3 - 5x7 Individuals
4 - Wallets Individuals **\$32.00**

ALL-IN-ONE OFFICE / GRAND PARENTS PHOTO

9 11x14 ALL - IN - ONE Includes Group & Individual \$30.00	10 10x20 ALL - IN - ONE + BUDDY Includes Group, Individual & Buddy \$38.00
---	---

Receive ALL-IN-ONE photo for half price with the purchase of a package 1 - 8 #9 half price - \$15 #10 half price - \$19

PERSONALIZED PRODUCTS

*ALL ITEMS INCLUDE YOUR NAME OR NICKNAME AND YEAR - SEE EXAMPLES ON BACK. *MOST ITEMS CAN BE INDIVIDUAL OR BUDDY

11 MAGAZINE COVER \$16.00 (8x10)	15 PENNANT MAGNETS \$14.00 (Set of 2 - 3.25x9)
12 16x20 BANNER \$23.00	16 DELUXE MAGNETS \$14.00 (set of 2 - 3.5x5)
13 12x30 PENNANT \$23.00	17 LANYARD 1 / \$12.00 (3.75x6.5) 2 / \$20.00
14 BANNER MAGNET \$14.00 (5x6.25)	18 MOUSE PAD \$15.00

BUDDY PACKAGES

Yourself, Best Buddies or Coach (up to 5 people)

19 DELUXE **\$20.00**
(2 - 5x7s and 8 - wallets)

20 STANDARD **\$15.00**
(1 - 5x7 and 4 - wallets)

INDIVIDUAL OR BUDDY

21 2 - 3" Photo Buttons \$12.00

22 1 - Photo Dog Tag \$12.00

23 1 - 8x10 \$15.00

24 2 - 5x7 \$15.00

25 8 - Wallets \$15.00

26 1 - 16x20 Ind. Poster \$27.00

TEAM/GROUP ONLY

27 1 - 16x20 Reg Funny \$27.00

28 1 - 11x14 Reg Funny \$24.00

29 1 - 8x10 Reg Funny \$20.00

T-SHIRTS

30 1 - Photo T-Shirt \$17.00